



Má bjóða þér gos? Eldfjöll sem aðdráttarafli í ferðamennsku

Haraldur Sigurðsson
Eldfjallasafn Stykkishólmi



Volcano Tours

Fræðsluferðir til eldfjallalanda í 30 ár

Menntun - dagleg erindi

Útivist, gönguferðir

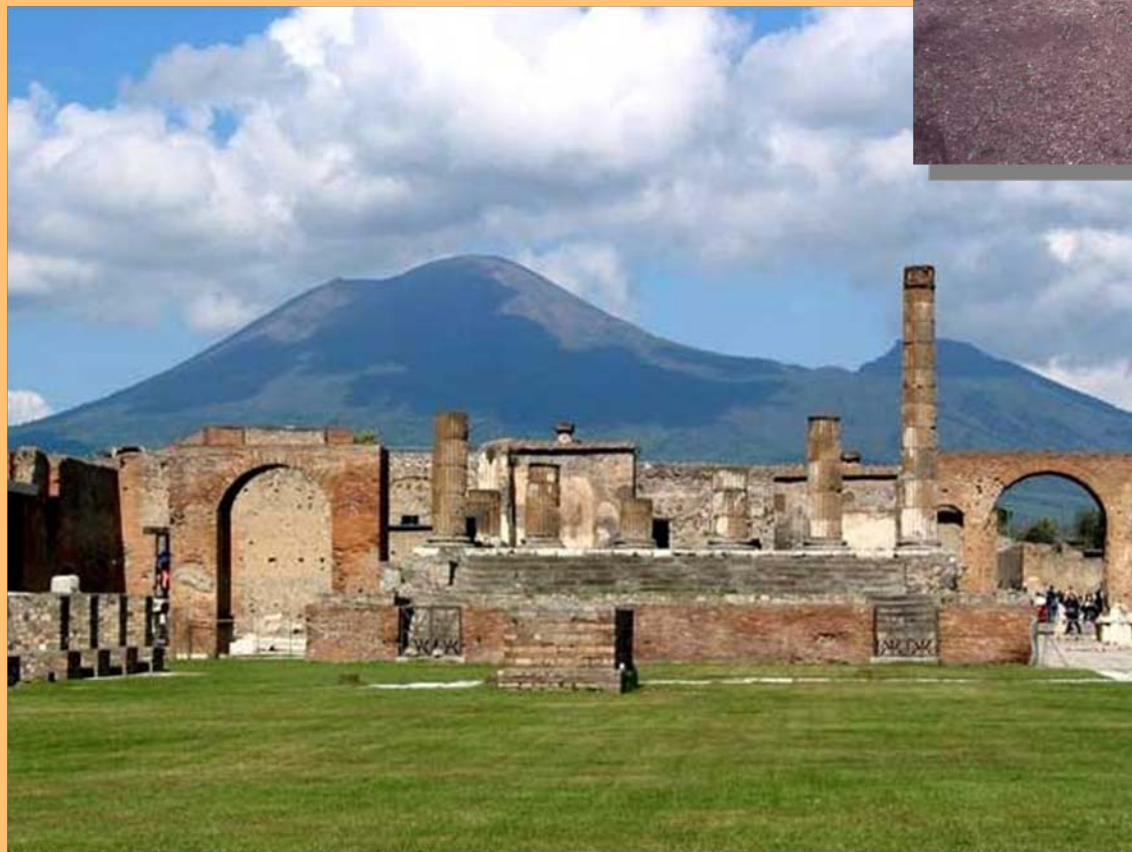
Menningarverðmæti, saga, fornminjar

Snerting við þjóðlíf

Ævintýraferð

10-14 dagar





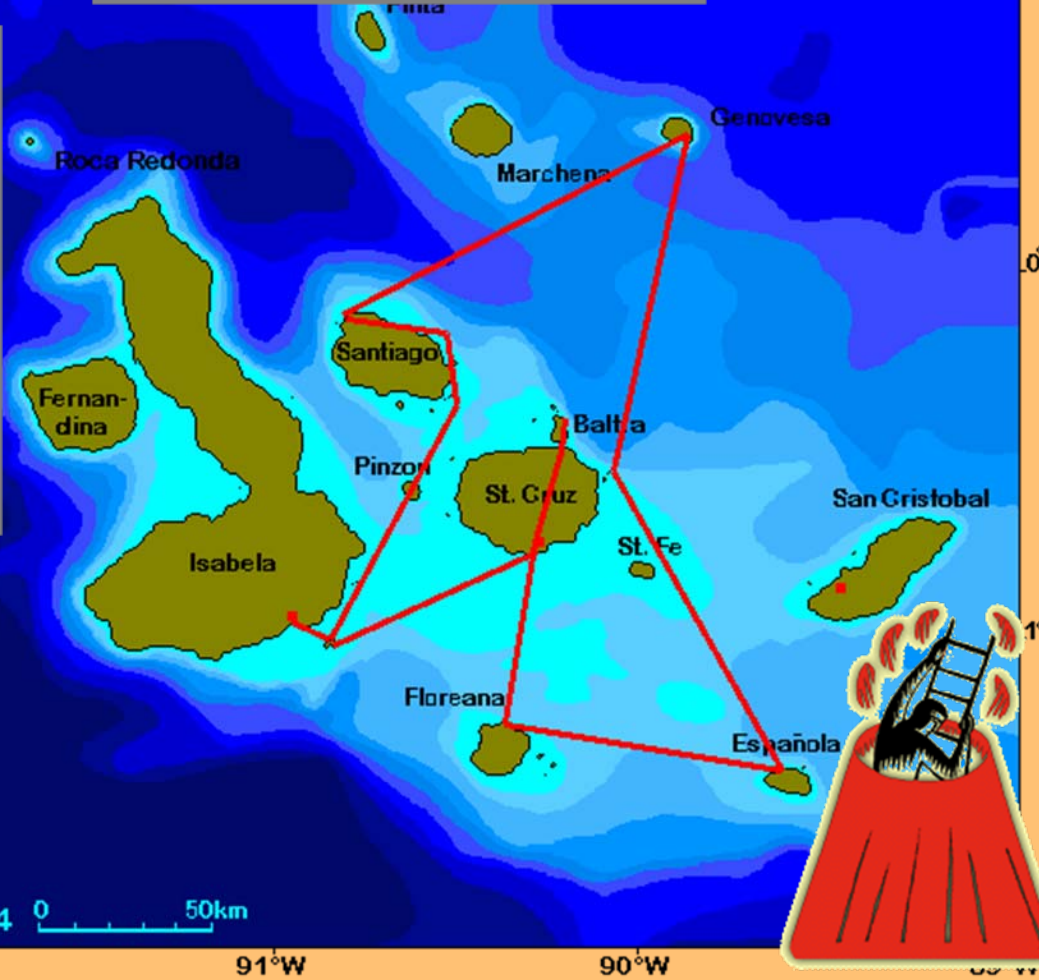
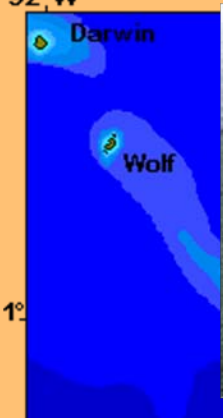
Vesúvius,
Pompeii,
Herkúlaneum





Santóríni í Eyjahafi

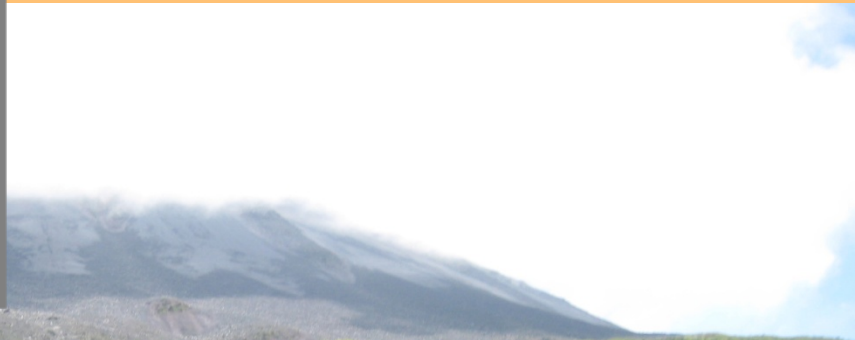






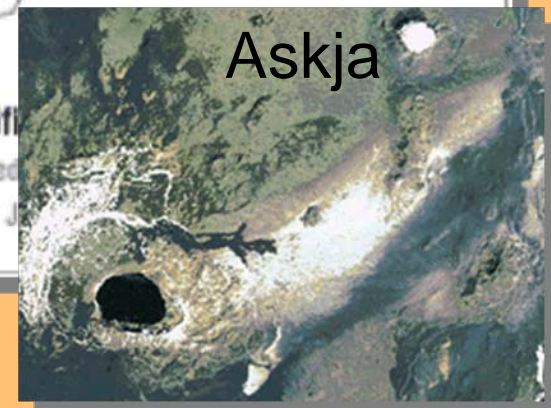
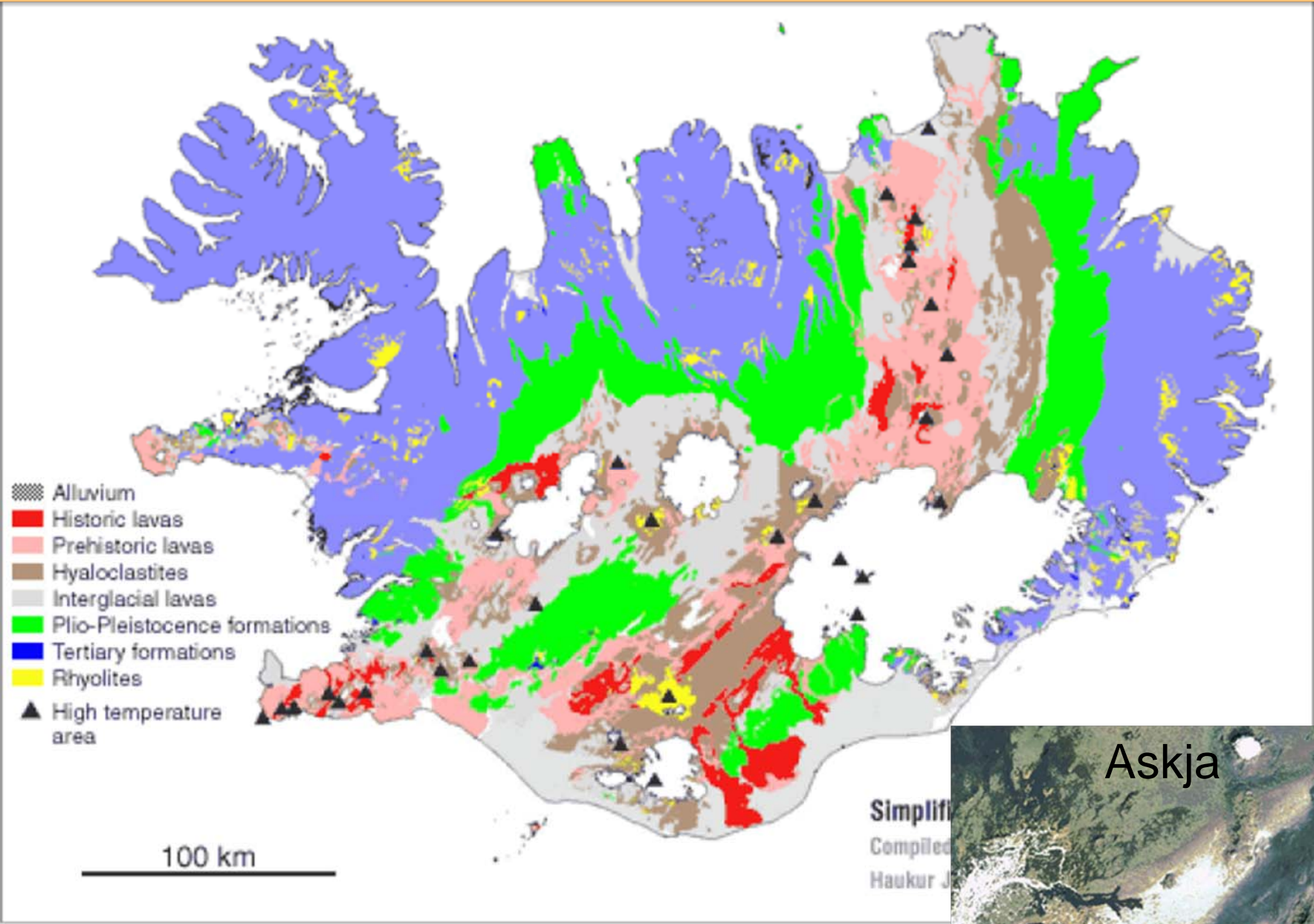
Fræðsla
Daglegir fyrirlestrar
Fræðsluefni - námskeið





Costa Rica
Arenal eldfjall







ELDFJALLASAFN

í Stykkishólmi

<http://www.eldfjallasafn.is/>

Opnunartímar

Kort

Leiðsögn

Póstur

English

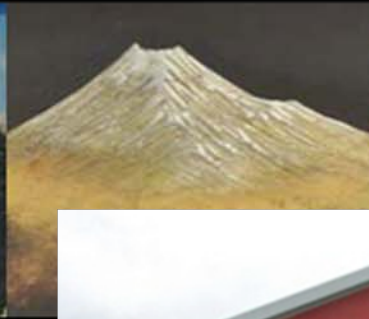
Fræðsluferðir

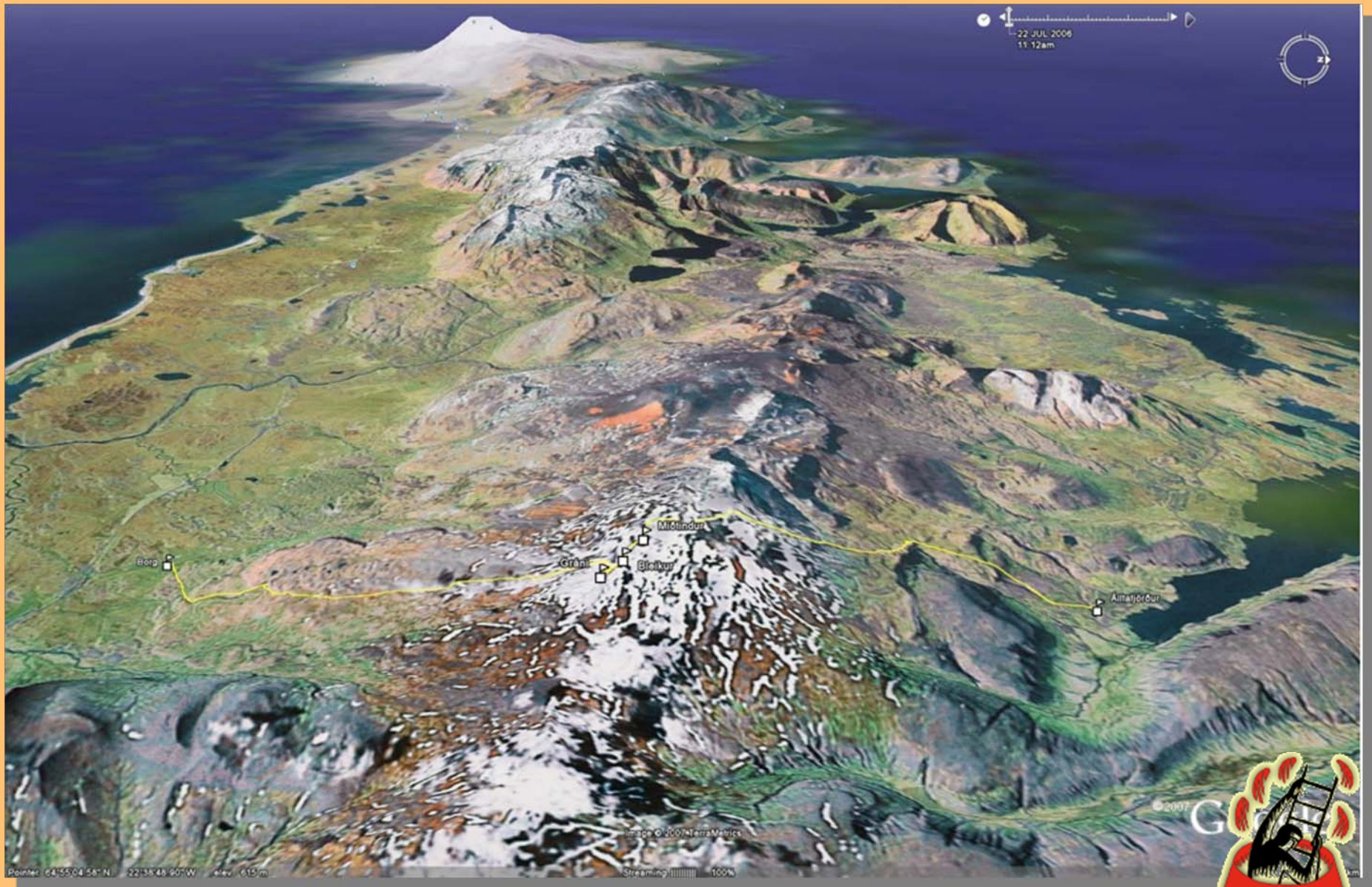
Uppruni & Efniviður

Framtíðin

Vettvangur

Á döfinni



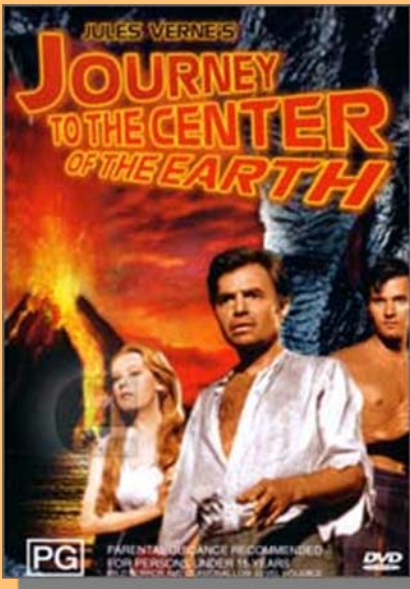
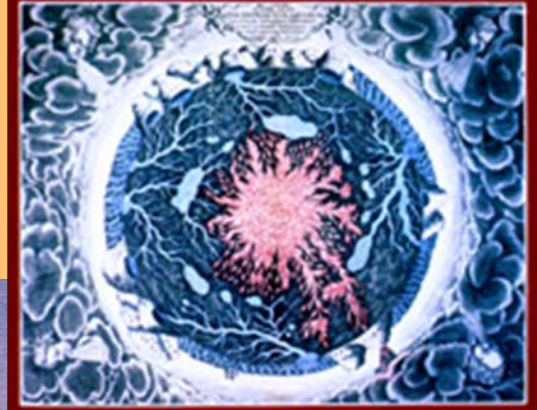


Eldfjallasafn Stykkishólmi



Snæfellsjökull

Journey to the
Center of the Earth
by Jules Verne





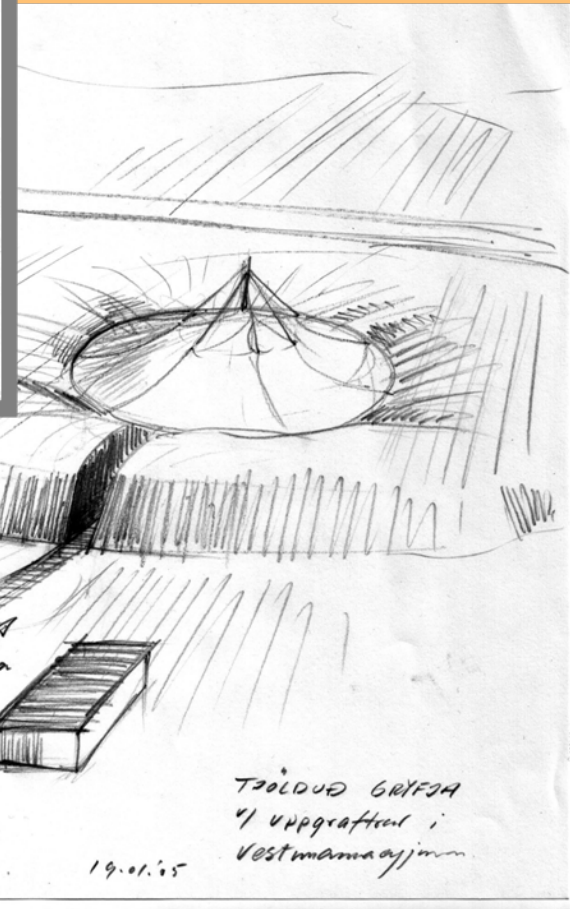
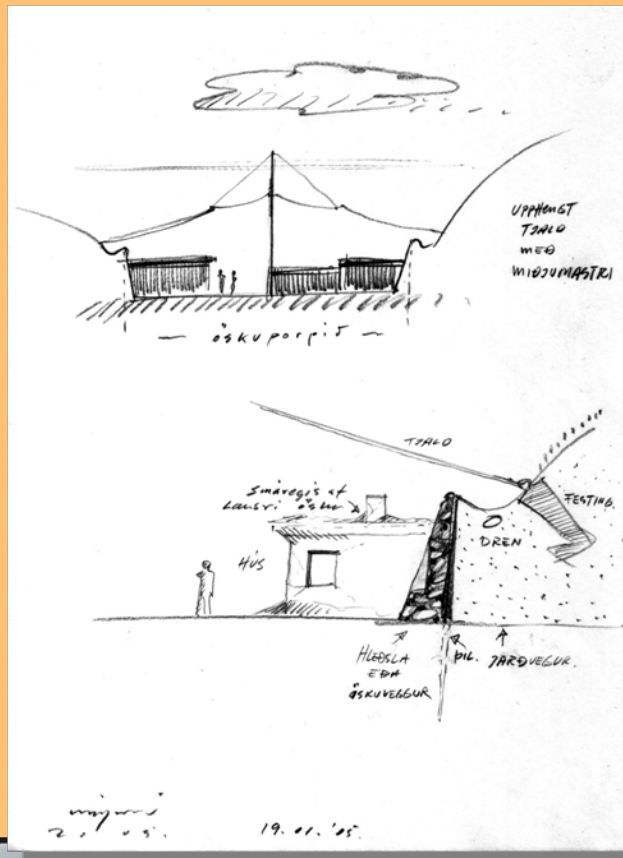
Tækifærin eru óprjótandi varðandi
ferðamennsku tengda elfjöllum.







Pompeii norðursins Vestmannaeyjar



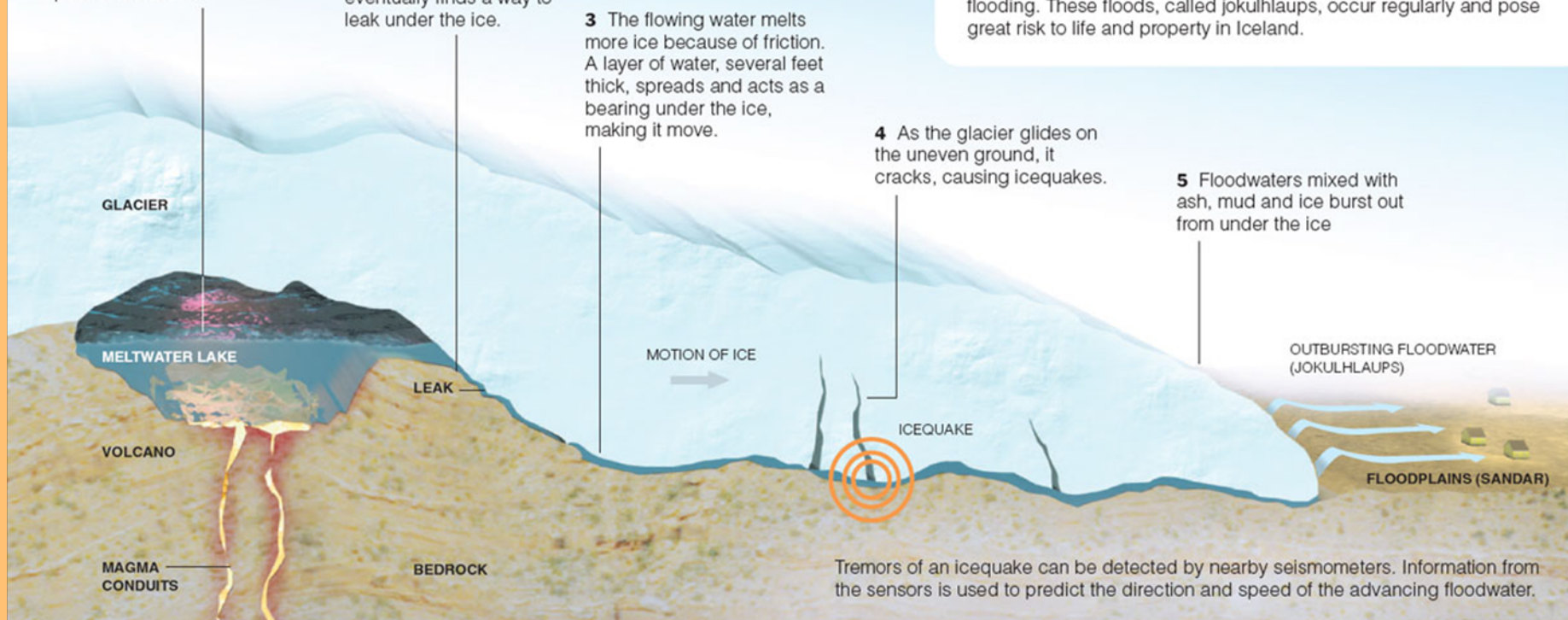
1 Fluids, gases and steam from the volcano continuously melt the overlying ice, creating a pool of meltwater.

2 As the water rises, it eventually finds a way to leak under the ice.

3 The flowing water melts more ice because of friction. A layer of water, several feet thick, spreads and acts as a bearing under the ice, making it move.

4 As the glacier glides on the uneven ground, it cracks, causing icequakes.

5 Floodwaters mixed with ash, mud and ice burst out from under the ice



Eruptions, Icequakes and Flooding

Under Iceland's cloak of glacial ice lie active volcanoes, which can melt and move the massive glaciers, creating icequakes and violent flooding. These floods, called jokulhlaups, occur regularly and pose great risk to life and property in Iceland.